

# Giving a Presentation

**Wolfram Burgard**

---



**AIS** Autonomous  
Intelligent  
Systems

# Outline

- The slides
  - Content
  - Layout
- The presentation

# The Slides

- Typically done long before the presentation
- and long enough to practice
- They are used to better convey the message
- Their purpose is not to allow you to read off what you want to say

# Choosing a Proper Title is Hard

- The title of a slide often says what is on the slide
  - You actually can do better: Use the title to convey a message
  - The title should better tell the message of the slide.
- vs.
- Choosing a Proper Title is hard
  - What is a Proper Title?

# The Structure of Scientific Presentations is often Similar

1. Introduction and Motivation
  2. State of the Art
  3. Our Approach
  4. Results
  5. Conclusions and Future Work
- This/such a slide is contained in many presentations
  - Maybe it is better to leave it out if your presentation is short.

# Introduction and Motivation

Describe

- the problem
- why it is relevant
- the open question
- in which way the approach you present gives an answer to this question

# State of the Art

- Mention relevant approaches presented in the past.
- Tell in which way the approach presented in this paper goes beyond the previous ones.
- The art lies in finding the right balance when describing related work
- Say what the approaches do and what they solve (be friendly, make the authors happy!)
- Say in which way your approach is better (do not make the authors unhappy!)

# The Approach

- This part of the presentation is not intended to demonstrate your skills
- It is intended to let the audience understand how your approach works
- Provide the audience with an intuition!
- Use graphics to describe it!
- Explain the math using graphics!



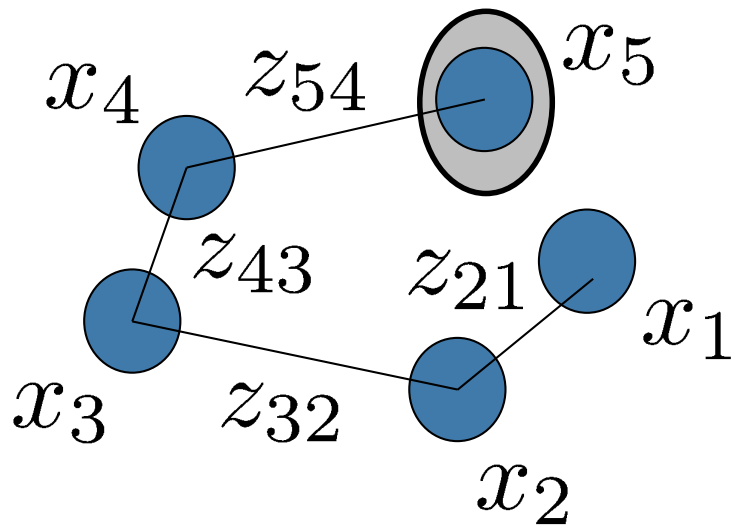
# Example: Graph-based SLAM

- Let  $\mathcal{G} = (\mathbf{x}, \mathbf{z})$  be a graph where  $\mathbf{x} = \{x_1, \dots, x_n\}$  is a set of poses and  $\mathbf{z} = \{z_{ji}\}$  is a set of pairwise observations of poses  $j$  and  $i$ , where  $\Omega_{ji}$  is the corresponding measurement uncertainty.
- Furthermore let  $e_{ji}$  be the errors between the pairwise observations  $z_{ji}$  and the relative poses  $x_{ji}$
- Goal: Find  $\mathbf{x}^* = \underset{\mathbf{x}}{\operatorname{argmin}} \sum_{ji} e_{ji}^T \Omega_{ji} e_{ji}$

# Maybe Better: Graphical Example

Given:

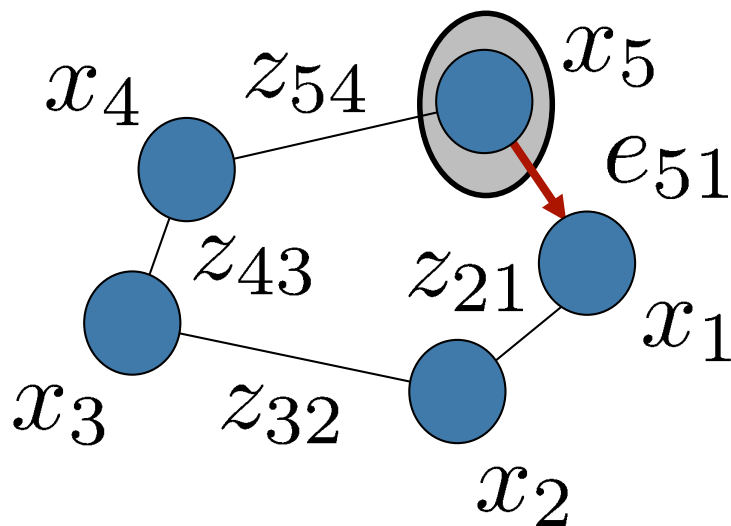
- Poses  $\mathbf{x} = \{x_1, \dots, x_n\}$
- Pairwise observations:  $\mathbf{z} = \{z_{ji}\}$
- Measurement uncertainty  $\Omega_{ji}$



# Maybe Better: Graphical Example

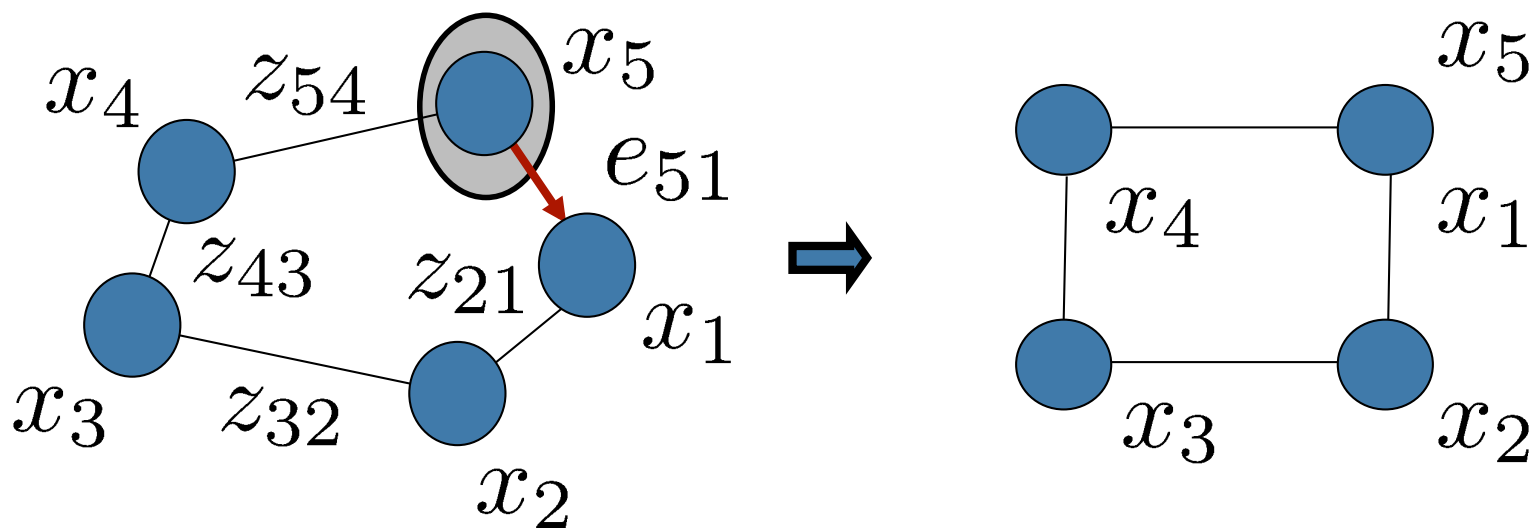
Given:

- Additionally we observe that  $x_5 = x_1$
- This introduces the error:  $e_{51}$



# Maybe Better: Graphical Example

- More generally, we have an error  $e_{ji}$  for every pairwise observation  $z_{ji}$  given the positions  $\mathbf{x}$  of the nodes
- Goal: Find  $\mathbf{x}^* = \operatorname{argmin}_{\mathbf{x}} \sum_{ji} e_{ji}^T \Omega_{ji} e_{ji}$



# Algorithms are Hard to Explain

---

**Algorithm 1** Coverage( $S$ )

---

```
1:  $C \leftarrow S$  //Set the current node to  $S$ 
2:  $\mathcal{P}_{aux} \leftarrow C$ 
3:  $\mathcal{P} \leftarrow \emptyset$ 
4: while 1
5:    $\forall n \in \mathcal{P}_{aux}, m \in \mathcal{N}, \|c_n - c_m\| < M_R \cdot e_{cell}$ 
     visited( $m$ ) = 1
6:    $\forall n \in \mathcal{P}_{aux}, m \in \mathcal{N}, \|c_n - c_m\| < 2M_R \cdot e_{cell}$ 
     overlapped( $m$ ) = 1
7:    $\mathcal{N}_C \leftarrow \{n \in \mathcal{N} \mid \|c_n - c_C\|_\infty = (2M_R + 1) \cdot e_{cell}$ 
     and overlapped( $n$ ) = 0 and  $g(n) < \infty\}$ 
8:   if  $\mathcal{N}_C \neq \emptyset$ 
9:     find  $M \in \mathcal{N}_C$  with minimal  $g$ 
10:  else
11:    D*'( $C$ ) and stop at visited( $M$ ) = 0
     or  $\|c_M - c_o\|_\infty = e_{cell}, o \in \mathcal{O}$  and  $\exists n,$ 
     visited( $n$ ) = 0,  $\|c_M - c_n\| < M_R \cdot e_{cell}$ 
12:    if no such node  $M$  exists
13:      return  $\mathcal{P}$ 
14:    end
15:  end
16:   $\mathcal{P}_{aux} \leftarrow \mathcal{P}_{aux}(C, M)$ 
17:   $C \leftarrow M$  //Set the new current node
18:   $\mathcal{P} \leftarrow \mathcal{P} \cup \mathcal{P}_{aux}$ 
19: end
```

---

# Explaining Algorithms

- Describe the idea
- Give examples to describe how it works
- Design the examples so that all features of the algorithms can be explained
- Once you are done with the examples, the audience should have an idea how it works

# The Results

- The results should back up your claims
- With them you show/demonstrate that your approach has the desired features.
- They should clearly demonstrate that the approach you present is better than previous ones.

# The Conclusions and Future Work

- Tell what the contribution of this paper is
- A good first sentence starts with “We presented a novel approach to ...”
- Tell what has been described in the presentation/paper
- Maybe talk about limitations that might lead to future work



# Seminar Talks about Other People's Work

- You might add slides describing your opinion about the paper.
- Tell what you regard as positive aspects
- Tell which potential improvements you see
- What would you have done differently?

# Text

- Use sans serif fonts instead of serif fonts
- Use
  - dark text on light background (easy to read)
  - light text on dark background (not so easy to read)
    - Left-aligned text is easier to read than centered text
- Avoid putting too much onto one slide (avoid clutter)

# Text

- Use sans serif fonts instead of serif fonts
- Use
  - dark text on light background (easy to read)
  - light text on dark background (not so easy to read)

Left-aligned text is easier to read  
than centered text

- Avoid putting too much onto one slide  
(avoid clutter)

# Text

- Use sans serif fonts instead of serif fonts
- Use
  - dark text on light background (easy to read)
  - light text on dark background (not so easy to read, printing uses much ink)
    - Left-aligned text is easier to read than centered text
- Avoid putting too much onto one slide (avoid clutter)

# Text Color

- Check readability
- Check readability
- Check readability
- Check readability
- Red and green are hard to distinguish for a large fraction of the population
- Check readability, maybe ask others!

# Text Size

- Make sure that everyone can read the text (32Pt)
- Make sure that everyone can read the text (28Pt)
- Make sure that everyone can read the text (24Pt)
- Make sure that everyone can read the text (20Pt)
- Make sure that everyone can read the text (18 Pt)
- Make sure that everyone can read the text (16 Pt)
- Make sure that everyone can read the text (14 Pt)
- Make sure that everyone can read the text (12 Pt)
  
- The caption should not be smaller than the text on the slide

# Abbreviations

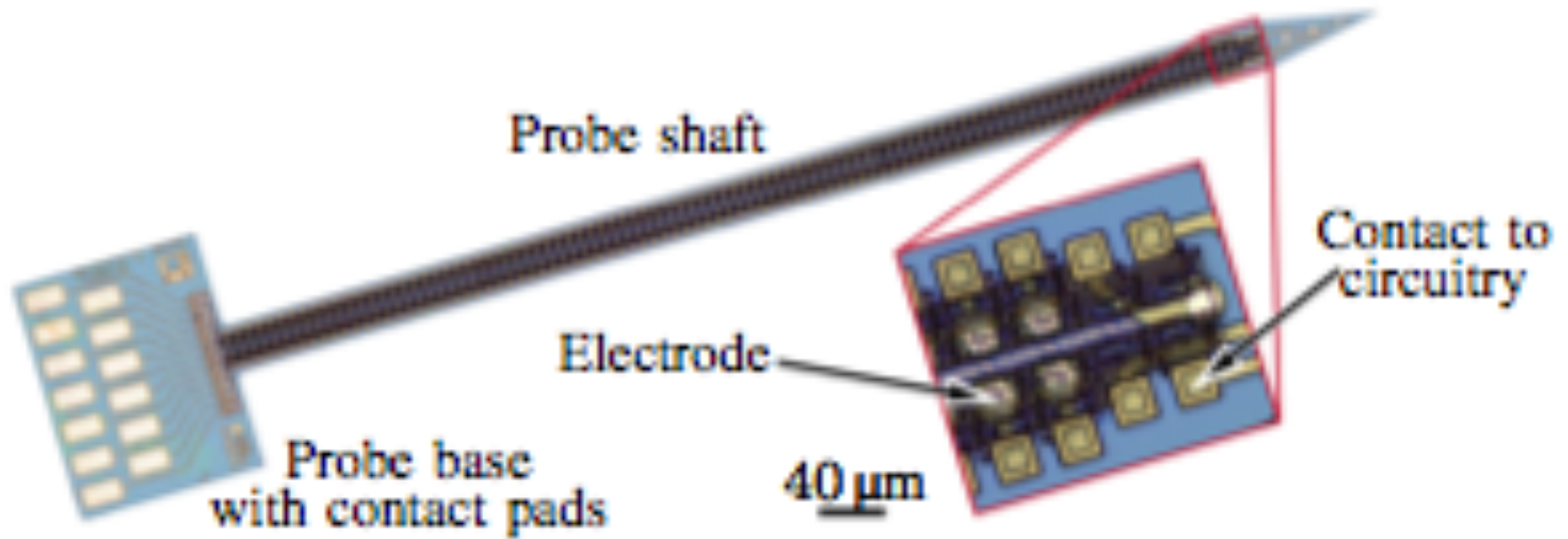
- Abbreviations reduce the length of the text
- However, they also make the text harder to read and to understand
- Don't use abbreviations to show that you are an insider
- Don't use abbreviations to show that newcomers are outsiders
- Avoid abbreviations (unless they are very, very common)
- Especially avoid them in titles

# Figures

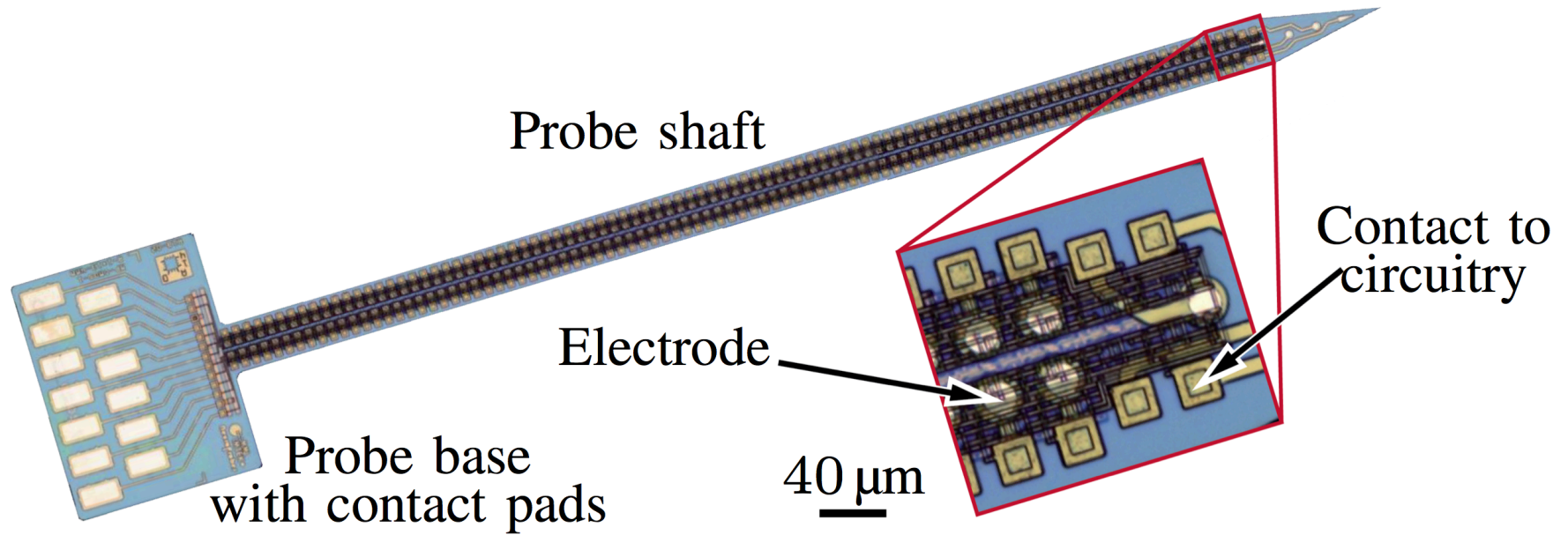
- Prefer vector graphics over images
- When grabbing an image from the source paper, make sure you do this at the highest resolution
- Enlarge the picture as much as possible before grabbing it
- When you can see the individual pixels, think about redrawing the figure!
- To check, attach your computer to an LCD monitor and check the quality by going close to the screen.



# A Low Resolution Figure



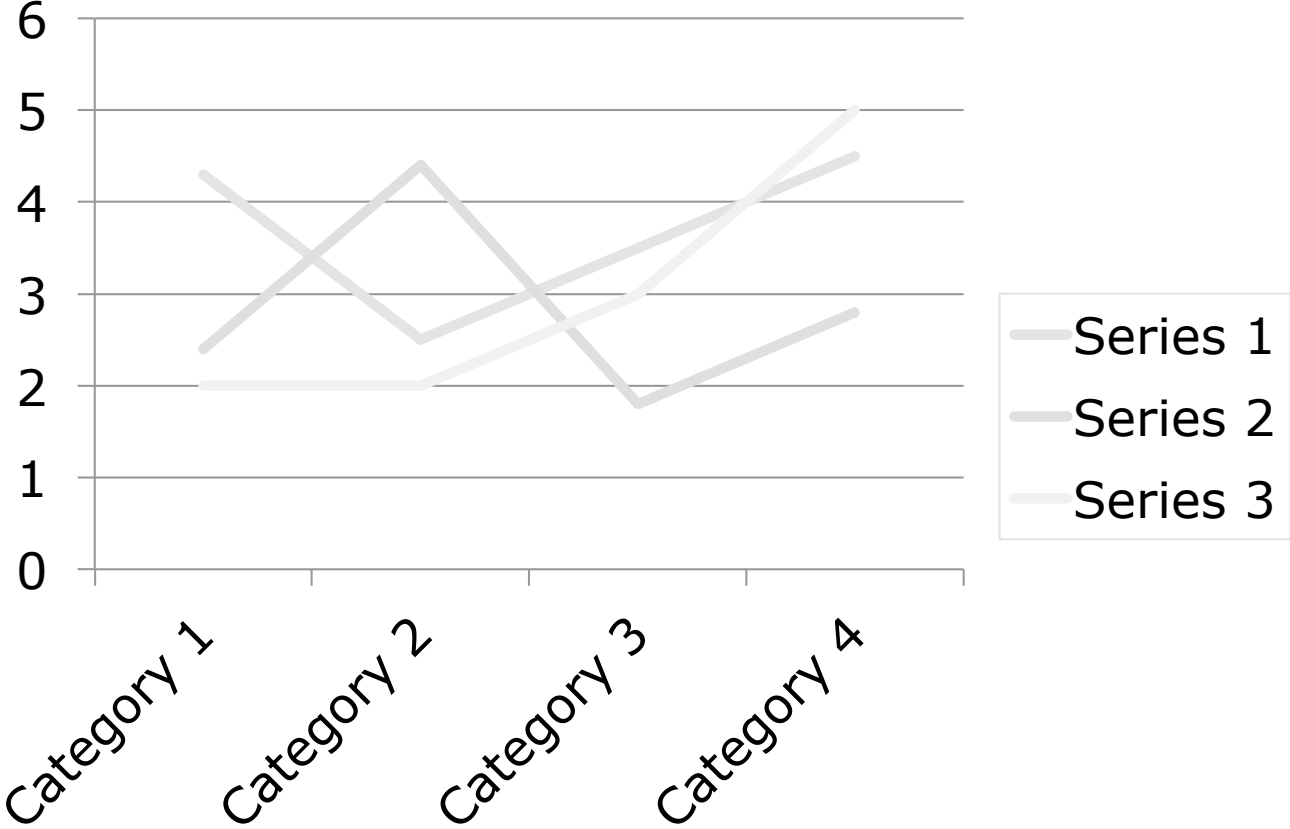
# Higher Resolution is better!



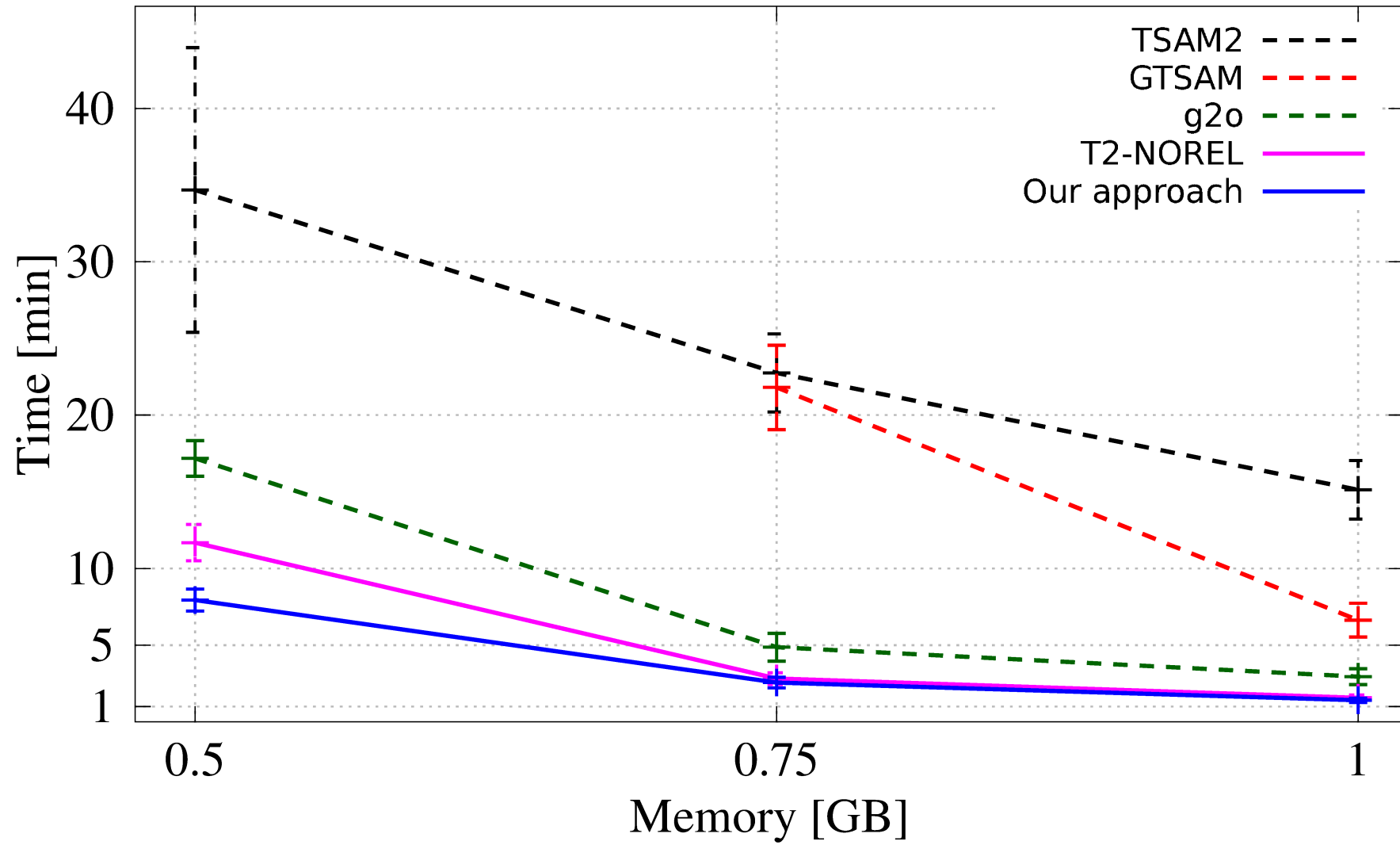
# Plots

- Use colors that can easily be distinguished
- Use patterns that can easily be distinguished
- Order the legend according to the functions
- Make them high resolution
- Create your own one if needed

# Negative Example Plot



# Colors are better!



# Animations

- Useful to explain content
- or to illustrate processes
  
- and not to entertain the audience
- Avoid line after line text-animations
- Often animations are even distracting
- Do not demonstrate that you know every feature of the presentation tool!

# Line after Line Animations

Every technical presentation has the following outline:

1. Motivation
2. Outline of the talk
3. State of the art
4. The new method
5. Experimental results
6. Conclusions

# The Motivation

- What is the problem?
- Why is it relevant?
- What has been done thus far?
- What is the key idea of the approach presented in the paper?
- In which way do the experiments demonstrate that it provides a better solution to the problem?
- Simply avoid custom animations!



# Similar Case in LaTeX Beamer

- What is the problem?
- Why is it relevant?
- What has been done thus far?
- What is the key idea of the approach presented in the paper?
- In which way do the experiments demonstrate that it provides a better solution to the problem?

# Similar Case in LaTeX Beamer

- What is the problem?
- Why is it relevant?
- What has been done thus far?
- What is the key idea of the approach presented in the paper?
- In which way do the experiments demonstrate that it provides a better solution to the problem?

# Similar Case in LaTeX Beamer

- What is the problem?
- Why is it relevant?
- What has been done thus far?
- What is the key idea of the approach presented in the paper?
- In which way do the experiments demonstrate that it provides a better solution to the problem?

# Similar Case in LaTeX Beamer

- What is the problem?
- Why is it relevant?
- What has been done thus far?
- What is the key idea of the approach presented in the paper?
- In which way do the experiments demonstrate that it provides a better solution to the problem?

# Similar Case in LaTeX Beamer

- What is the problem?
- Why is it relevant?
- What has been done thus far?
- What is the key idea of the approach presented in the paper?
- In which way do the experiments demonstrate that it provides a better solution to the problem?

# Spell Checking

- Your computer can do spell checking for you: Use it!
- Always set the language of the slide to the language that you are using

Benutzen Sie die Rechtschreibprüfung!

- Benutzen Sie die Rechtschreibprüfung!

# Typesetting Formulas

■ In-text:  $\sum_{i=1\dots n} i = n*(n+1)/2$

■ Equation Editor:  $\sum_{i=1}^n i = \frac{n*(n+1)}{2}$

■ TeXPoint:  $\sum_{i=1}^n i = \frac{n*(n+1)}{2}$

# Inline Equations

- Easy to type
- Always aligned with text
- Float with text
  
- Restricted
- Very few symbols available
- Hard to align elements (equation symbol)



# Equation Editor

- Relatively easy
  - Graphical interface
  - High flexibility
  - Nicer
- 
- Each equation is an individual object
  - They do not float with text
  - Nice but not absolutely nice

# TeXPoint

- Full LaTeX flexibility
- Equations can be pasted from LaTeX-sources
- The nicest equations
- Each equation is an individual object
- They do not float with text
- Harder to learn
- Text interface

# Important Aspects to Check

- Set the **language of the slides to the language of the presentation**
- **Spell** your slides (press F7)
- Check whether videos run when Computer is attached to LCD Display
- Check whether videos run on a different computer
- Friendly video codecs are
  - **MP4 with H.264 standard settings** or
  - **MS RLE** encoding for animations

# Use Consistent Colors & Shapes

- Think about the colors and shapes that you want and
- stick with them.

# Your Presentation

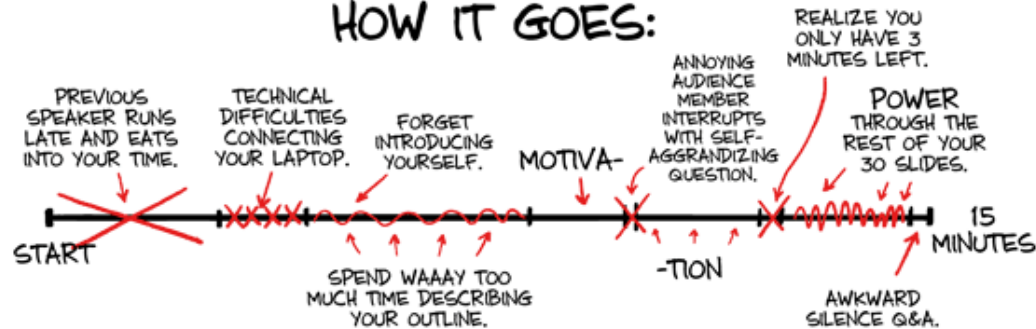
- Plan it
- Practice it
- Time it
- Think about how to deal with interrupting questions
- Practice transitions between slides
- Keep in mind: This is your show. Optimize it!

# YOUR CONFERENCE PRESENTATION

## HOW YOU PLANNED IT:



## HOW IT GOES:



# Connecting your Laptop

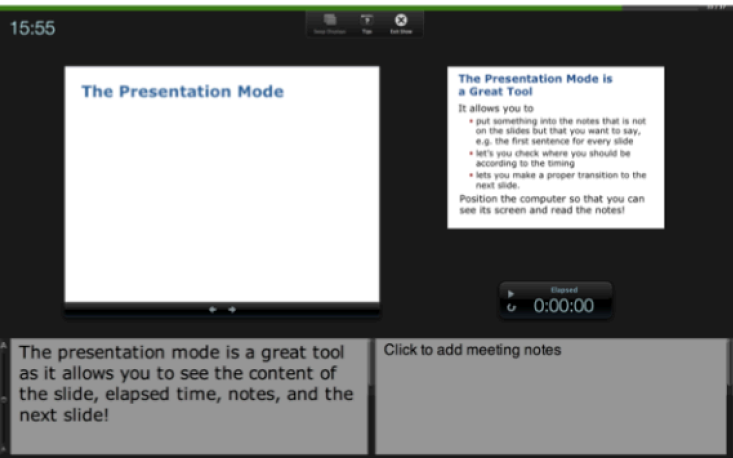
- Check whether your laptop works before the talk
- Are the colors OK?
- Are the videos visible on both screens?
- Do not boot your computer in front of the audience (use suspend to RAM)
- Better do not close the lid before connecting your laptop
- Check the entire presentation (esp. videos) when you have to give it on a computer different from yours

# The Presentation Mode

15:56

Swap Displays Tips Exit Show

## The Presentation Mode



15:55

### The Presentation Mode is a Great Tool

It allows you to

- put something into the notes that is not on the slides but that you want to say, e.g. the first sentence for every slide
- let's you check where you should be according to the timing
- lets you make a proper transition to the next slide.

Position the computer so that you can see its screen and read the notes!

Elapsed 0:00:00

The presentation mode is a great tool as it allows you to see the content of the slide, elapsed time, notes, and the next slide!

Click to add meeting notes

Elapsed 0:00:00

A The presentation mode is a great tool as it allows you to see the content of the slide, elapsed time, notes, and the next slide!

A Click to add meeting notes



# The Presentation Mode is a Great Tool

It allows you to

- put something into the notes that is not on the slides but that you want to say, e.g., the first sentence for every slide
- lets you check where you should be according to the timing
- lets you make a proper transition to the next slide.

Position the computer so that you can see its screen and read the notes!

# Laser Pointer

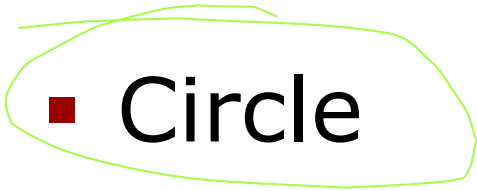
- Might help you to point at things
- or to emphasize aspects
  
- Hold the laser pointer in both hands if the laser point jitters
- Not everything needs to be pointed at
  
- Do not point at the audience,
- Start and stop the laser properly
- Familiarize yourself with the buttons
- and the other features (timer)

# Laser Pointer Gestures

- Underline



- Circle



- Point at 

# Speaking (1)

- Speak up to make sure that everyone can hear you.
- If there is a microphone, speak into it!
- Do not lower your voice simply because there is a microphone
- If you can hear your voice from the speakers, the audience does as well
- If you cannot hear it, the audience will probably also not be able to hear it (and you)

## Speaking (2)

- Avoid dialect
- Avoid idioms
- Avoid repetitions (look for alternatives or synonyms if you discover it)
- Avoid hesitation vowels like “ahem”, “uh”, “well”, “yes”, “OK”, ...

# How to Move?

- Establish contact to the audience
- Do not solely focus the computer screen or the screen
- Avoid siding (try to look at everyone)

# Questions / Interruptions?

- Think positive!
- Questions are good and show that people are interested
- Try to repeat the question to make clear that you understood it properly
- If you cannot answer a question, be honest about it and do not say random words
- If answering would take too long or would go too far away from the talk, suggest to take the discussion offline
- Do not worry when someone falls asleep

# Summary

- A talk is a unique opportunity to present yourself
- Prepare it carefully
- Practice it extensively
- There is no reason to be late with your presentation
- There is no reason not to be prepared



**Thank you for your attention!**

This slide appears in almost every talk  
but actually is superfluous.